

# **KAMO POWER**

## **345kV Project**

KAMO Power is headquartered in Vinita, OK and provides wholesale (bulk) electricity to seventeen rural electric cooperatives, eight in Southwest Missouri and nine in Northeast Oklahoma. KAMO provides high voltage electrical transmission and distribution from south of Kansas City, Missouri to northeast of Oklahoma City, Oklahoma. KAMO owns, operates and maintains approximately 2,500 miles of high voltage transmission line.

KAMO Power has operated as an electric utility in Missouri and Oklahoma since the 1940's and recently became recognized by the Kansas Corporation Commission (KCC) as an Electric Utility in the State of Kansas. The KCC has granted KAMO a Limited Certificate of Public Convenience to construct, own and operate this particular transmission line.

The transmission project is necessary to improve reliability and provide for regional load growth of the electric cooperatives. In order to construct a project of this magnitude, KAMO has complied with the National Environmental Policy Act of 1969 (NEPA) and has filed extensive information and reports as required by the NEPA.

KAMO has initiated an approximate 100 mile project for a new 345 kilovolt line to be constructed from Blackberry, Missouri (near Jasper); through the southeast corner of Kansas; and entering Oklahoma at a point, northeast of Commerce and continuing on west of Vinita. Then, southwest to the Mid-America Industrial Park (Pryor-Chouteau area) to connect to approximately 700 megawatts of coal and natural gas generation owned by KAMO and its power supplier, Associated Electric Cooperative of Springfield, MO.

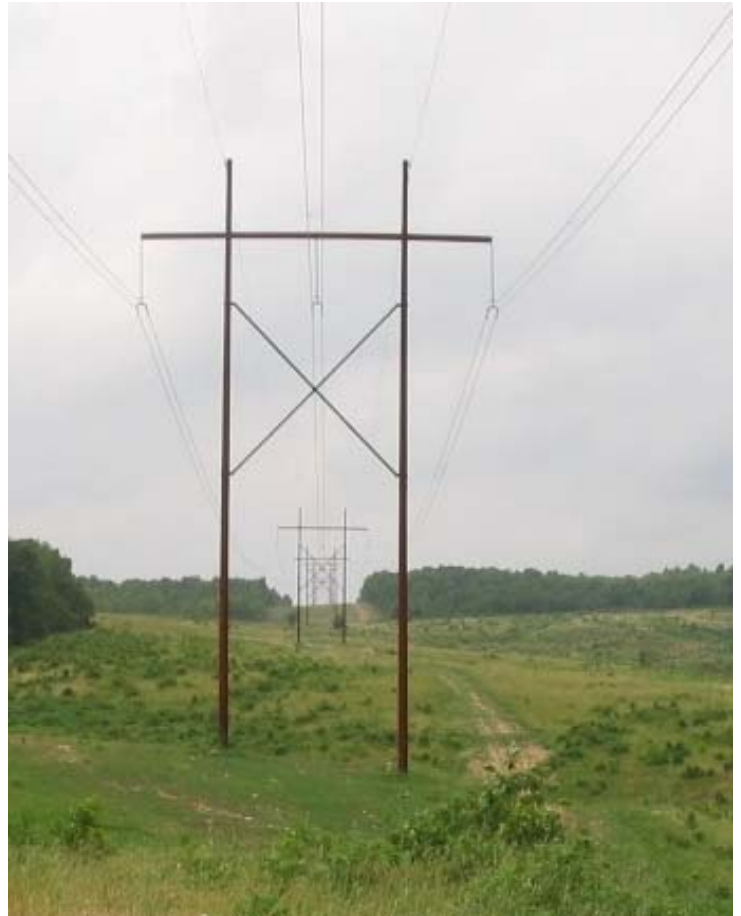
The construction process will require: 1) macro corridor (line path) be flown again; 2) line route be finalized; 3) landowners to be contacted regarding easements; 4) begin clearing the right-of-way; 5) construction of the actual 100 mile line; 6) line energized. The project has commenced and is planned to be in service spring 2011.

Should you need information regarding this project you may contact Terry Brown at KAMO Power at (918) 256-1804 or by email at [tbrown@kamopower.com](mailto:tbrown@kamopower.com).

# **FACTS**

Typical height .....	80 Ft
Typical width at top .....	54 Ft
Typical distance between structures .....	700 Ft
Typical right-of-way width .....	150 ft
Voltage .....	345Kilovolts
Structure Material .....	wood or Wood equivalent

### **Typical Structure**



## 345kV Project

KAMO Power is headquartered in Vinita, OK and provides wholesale (bulk) electricity to seventeen rural electric cooperatives, eight in Southwest Missouri and nine in Northeast Oklahoma. KAMO provides high voltage electrical transmission and distribution from south of Kansas City, Missouri to northeast of Oklahoma City, Oklahoma. KAMO owns, operates and maintains approximately 2,500 miles of high voltage transmission line.

KAMO Power has operated as an electric utility in Missouri and Oklahoma since the 1940's and recently became recognized by the Kansas Corporation Commission (KCC) as an Electric Utility in the State of Kansas. The KCC has granted KAMO a Limited Certificate of Public Convenience to construct, own and operate this particular transmission line.

The transmission project is necessary to improve reliability and provide for regional load growth of the electric cooperatives. In order to construct a project of this magnitude, KAMO has complied with the National Environmental Policy Act of 1969 (NEPA) and has filed extensive information and reports as required by the NEPA.

KAMO has initiated an approximate 100 mile project for a new 345 kilovolt line to be constructed from Blackberry, Missouri (near Jasper); through the southeast corner of Kansas; and entering Oklahoma at a point, northeast of Commerce and continuing on west of Vinita. Then, southwest to the Mid-America Industrial Park (Pryor-Chouteau area) to connect to approximately 700 megawatts of coal and natural gas generation owned by KAMO and its power supplier, Associated Electric Cooperative of Springfield, MO.

The construction process will require: 1) macro corridor (line path) be flown again; 2) line route be finalized; 3) landowners to be contacted regarding easements; 4) begin clearing the right-of-way; 5) construction of the actual 100 mile line; 6) line energized. The project has commenced and is planned to be in service spring 2011.

Should you need information regarding this project you may contact Terry Brown at KAMO Power at (918) 256-1804 or by email at [tbrown@kamopower.com](mailto:tbrown@kamopower.com).

---

# FACTS

Typical height.....80 Ft  
Typical width at top.....54 Ft  
Typical distance between structures....700 Ft  
Typical right-of-way width..... 150 ft  
Voltage .....345Kilovolts  
Structure Material..... wood or  
..... Wood equivalent

